



# NAGOYA CITY UNIVERSITY

## Exchange Program 2026-2027 Fall semester

### Fact Sheet

#### Basic Information

##### ◇ Institution

Nagoya City University

##### ◇ Campuses and Faculties

###### Takiko Campus

- Economics
- Humanities and Social Sciences
- Biology and Integrated Sciences
- Data Science



###### Sakurayama Campus

- Medical School



\*Medical School and Pharmaceutical Sciences don't accept exchange students as a rule.

###### Kita Chikusa Campus

- Design and Architecture



###### Tanabe-dori Campus

- Pharmaceutical Sciences



##### ◇ International Affairs Office

1 Yamanohata, Mizuho-cho, Mizuho-ku, Nagoya, JAPAN 467-8501

+81-52-872-6315

##### ◇ Contact person

Mio Nagase (Ms.), Gaho Sena (Ms.) [ryugaku@sec.nagoya-cu.ac.jp](mailto:ryugaku@sec.nagoya-cu.ac.jp)

##### ◇ Website

<http://www.nagoya-cu.ac.jp/international/index.html>

## Academic Information

### ◇ Semester

2026-2027 Fall Semester : Late September, 2026 ~ Early February, 2027

2027 Spring Semester : Early April, 2027 ~ Early August, 2027

### ◇ Exchange period

【Fall Semester (1 semester)】 or 【Fall Semester ~ Spring Semester (2 semester)】

\*Extension of exchange period will not be permitted after the application deadline.

### ◇ Website for course syllabus

<https://www.nagoya-cu.ac.jp/english/study/202303/>

<https://www.nagoya-cu.ac.jp/education/guide/syllabus/> (You can search the syllabus (Japanese))

### ◇ Classes

Classes to be taken at NCU will be determined after the orientation.

## Application

### ◇ Nomination

Deadline: April 1, 2026

-Home university send [nomination sheet] by email to [ryugaku@sec.nagoya-cu.ac.jp](mailto:ryugaku@sec.nagoya-cu.ac.jp)

### ◇ Application

Deadline: April 15, 2026

-After the nomination, nominees receive the application link for Exchange Program and Certificate of Eligibility (CoE). It must be completed and submitted by the deadline.

\*If students don't have google account, please contact [ryugaku@sec.nagoya-cu.ac.jp](mailto:ryugaku@sec.nagoya-cu.ac.jp).

-Required documents to be attached.

\*\*\*\*\*

- Transcript (for the latest year) (PDF)
- Photocopy of passport (PDF)
- Official document indicating the graduation date (PDF)
- Certificate of Japanese Language levels (PDF)
- Color ID photo (JPG)
- CV and portfolio [Graduate school of Design and architecture]

\*\*\*\*\*

### ◇ Language Requirement

Bachelor students must prove Japanese language levels when applying.

JLPT N3 or higher is recommended.

\*[Graduate school of Design and Architecture] English acceptable

\*[Other Graduate School] please contact [ryugaku@sec.nagoya-cu.ac.jp](mailto:ryugaku@sec.nagoya-cu.ac.jp)

### ◇ Japanese language courses

- Japanese Reading/Listening
- Japanese Writing
- Japanese Discussion
- Japanese Presentation

\*Japanese language courses are open and credited for all undergraduate students. No credits for graduate students but still available to attend some classes.

## NCU Dormitory

### ◇ Address

2-8 Dankei-Dori Showa-ku Nagoya, 466-0842 JAPAN

\* Off campus (10-25 mins to each campus by bicycle)

<http://www.nagoya-cu.ac.jp/international/intl-student/dormitory/index.html>

### ◇ Expenses

-Rent: ¥25,000 p/m (including water expense and maintenance fee)

- Other expenses: ¥6,000 - ¥8,000 p/m (gas and electricity - depending on use)

### ◇ Notes

Self-contained private flat, furnished (desk, chair, closet (Japanese style), futon bedding, refrigerator, gas stove, microwave, washing machine, bathroom (toilet and bath), A/C, Wi-fi available.



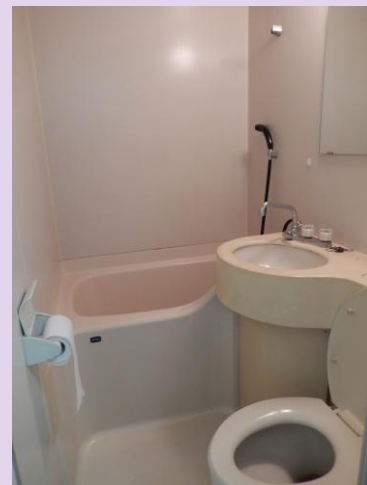
Exterior view of the dormitory



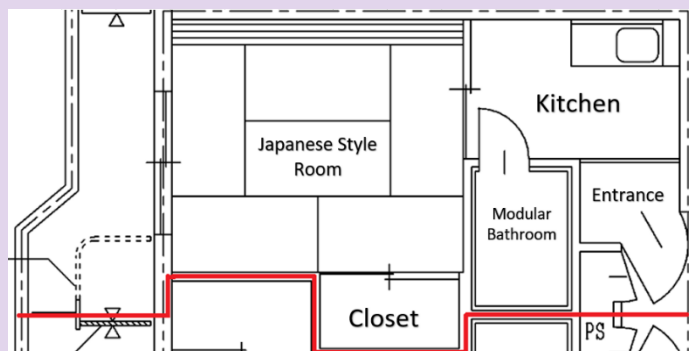
Japanese-style room



Kitchen



Bathroom



Layout of a room (21.33m<sup>2</sup>)

## An alternative in case NCU Dormitory is not available

International Student Center (Managed and operated by Nagoya International Center)

### ◇Address

2-29 Koei 2-Chome Minato-ku, Nagoya 455-0015 JAPAN

\* Off campus (30 mins by subway to each campus's nearest station)

<https://www.nic-nagoya.or.jp/japanese/international-student-center/>

### ◇Expenses

-Rent: ¥21,500 p/m (including Internet Facility)

-Other expenses; ¥6,000 - ¥8,000 p/m (water and electricity - depending on use)

### ◇Notes

Furnished room (bathroom, kitchen, air conditioner, bed, Internet, desk, chair, wardrobe, bookshelf, curtains) Futon is provided by NCU.

## Other Information

### ◇Orientation

To be announced.

### ◇Student tutor

Newly coming exchange student is assigned a Japanese student tutor who helps him/her with the first steps of living/studying in Japan. The student tutor will be arranged before your arrival.

### ◇Clubs

Exchange students can join NCU sports and culture clubs

### ◇Japanese classes for international students

Non-credit Japanese language courses are open for international students.

### ◇Insurance

-All students must have Japan's National Health Insurance (NHI). If you get ill or injured, you pay 30% of medical expenses to receive medical care. The remaining 70% of medical expenses are covered by NHI.

\*Insurance premiums (Insurance tax); approximatery 2,000 yen/ month

-All students are required to have adequate accident and health insurance coverage in home country (like as travel insurance etc...).

### ◇Events & Activities

A variety of events below are held on-campus and off-campus in Nagoya City. Exchange students are encouraged to actively participate in the events.

-Picture Book Reading to children at library

-Presentation about students' home countries at elementary/ junior/ high school

-International Students Party etc...



Picture book reading at local library



Presentation at local school